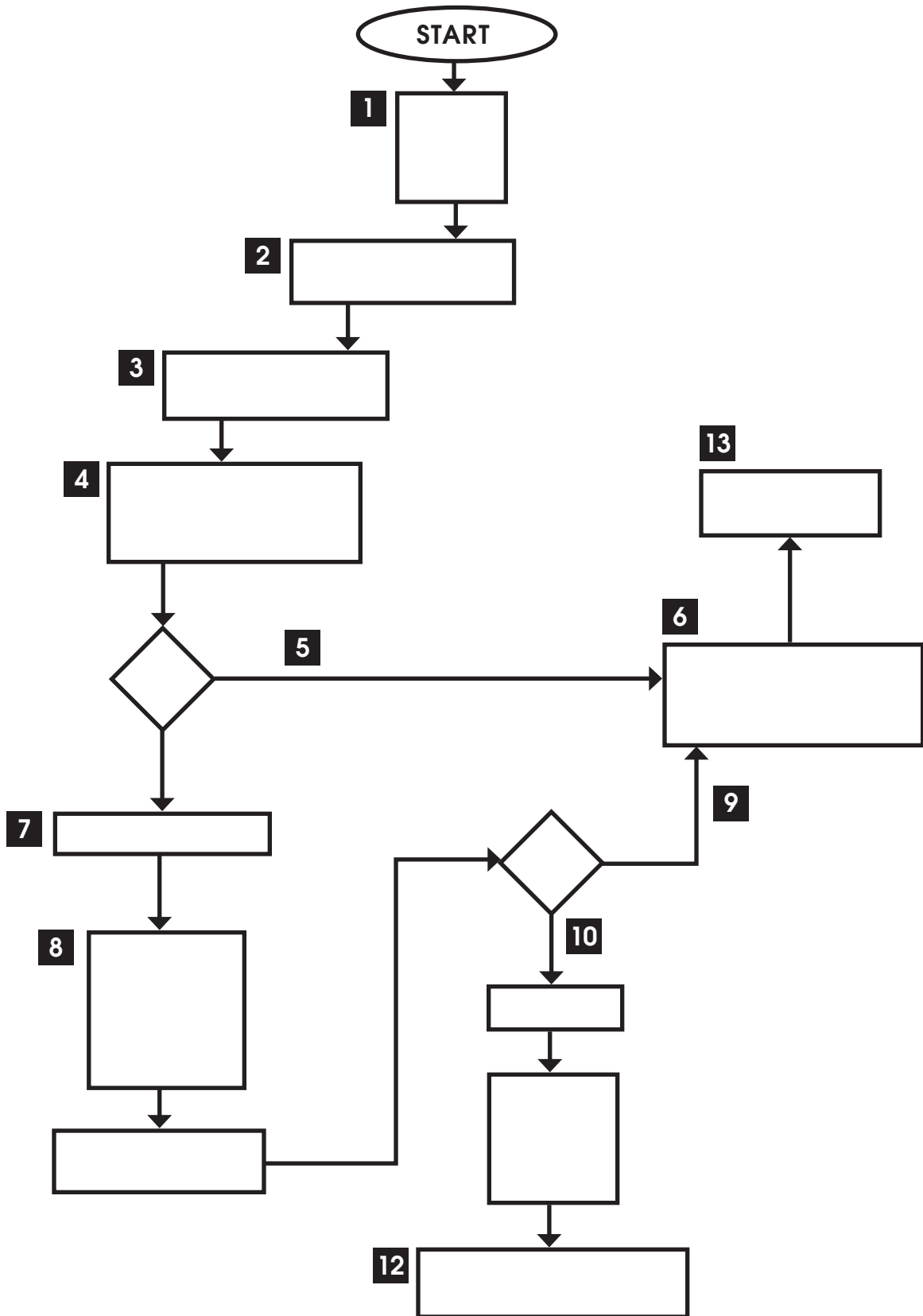


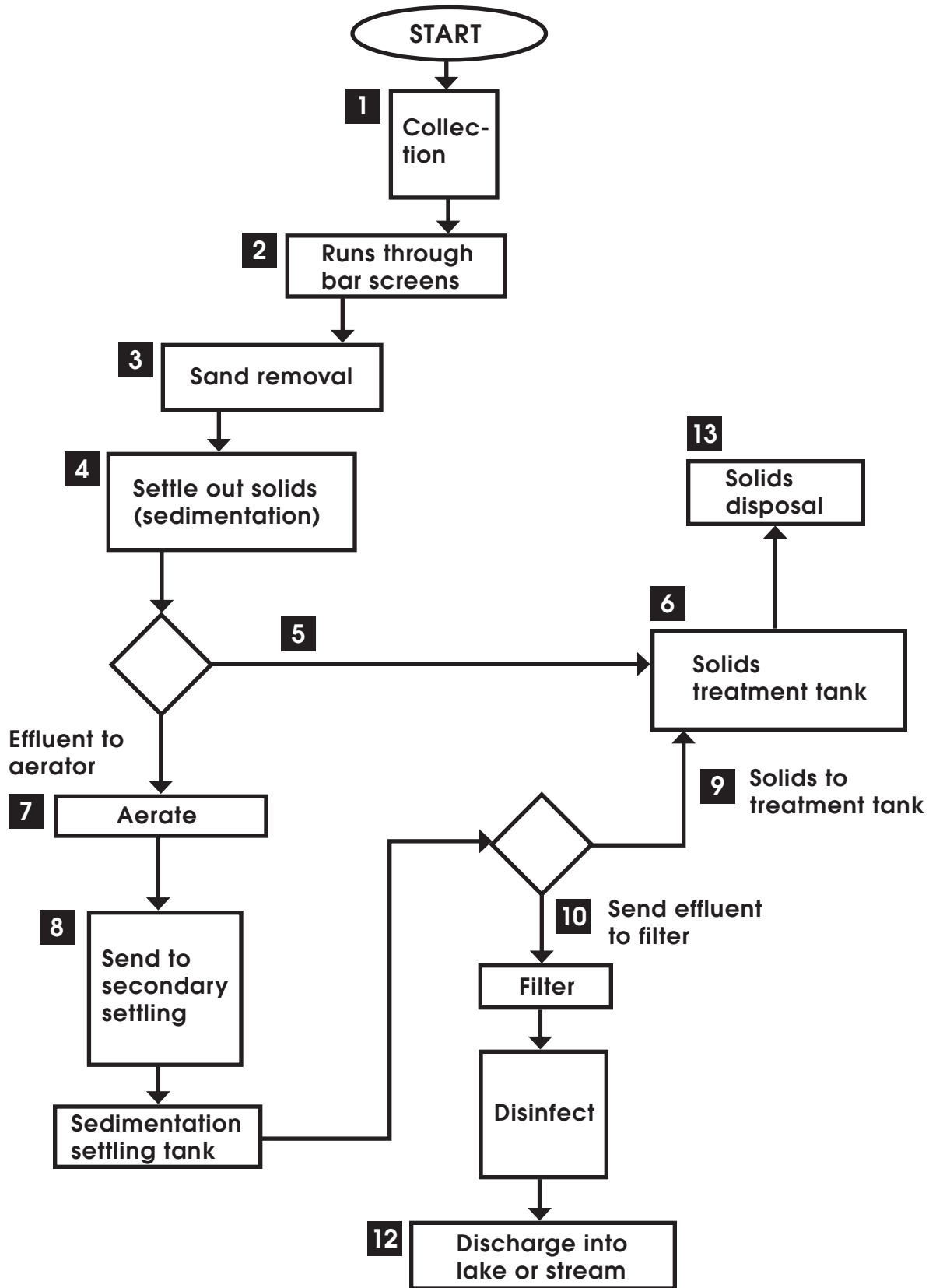
Flow Chart

Student Worksheet



Flow Chart

Answer Key



Flow Chart Directions

Student Worksheet

Steps To Clean Water:

1. Intake wastewater (collection)
2. Run through bar screens
3. Remove sand
4. Settle out solids (sedimentation)
5. Send solids to wastewater solids treatment tank
6. Treat solids for disposal
7. Add bacteria to effluent and aerate
8. Send to secondary settling tank (sedimentation)
9. Send solids to wastewater solids treatment tank
10. Send through filtration
11. Disinfect using chlorine, ultraviolet light or ozone
12. Discharge into lake or stream
13. Dispose of solids

Flow Chart Symbols:



Arrows

Arrows show the direction of the flow of wastewater from process to process.



Start/Stop

An oval is used to show where the treatment process starts and stops.



Square

A square is used to show when chemicals are added to or materials are removed from the wastewater.



Rectangle

A rectangle is used to show when a treatment process is taking place.



Diamond

A diamond is used to show when parts of the wastewater flow go in two different directions.