

Water Boatman

Fact Sheet

Order: *Hemiptera*

Family: *Corixidae*

Number of species in North America: 129

Size: 3–11 mm (adult)

Similar to: Backswimmer

- Backswimmers swim on back. Water boatmen swim upright.
- Backswimmers have long front legs. Water boatmen have short front legs.

Diet: Insect fluids, small, dead insect parts, detritus, algae.

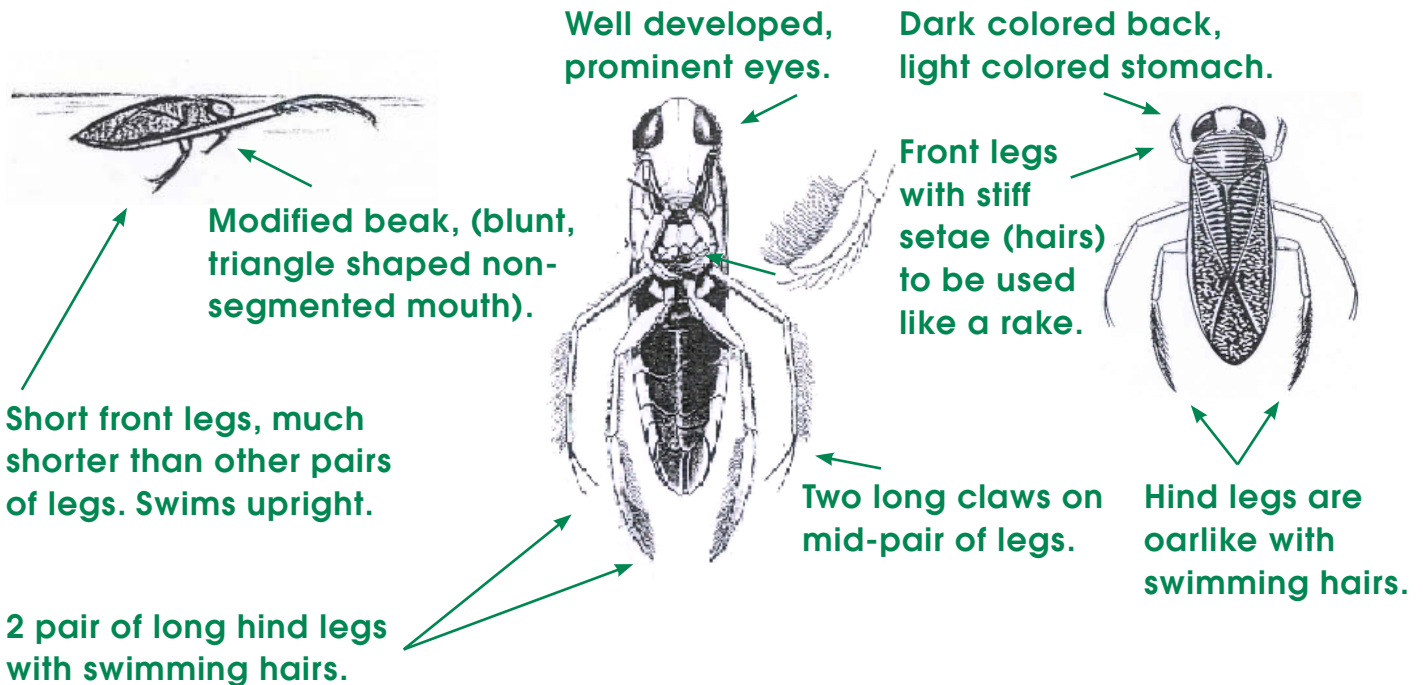
Food for: Fish (perch, bass, bluegill, crappie), predaceous water insects

Habitat: In the water and bottom. Ponds, shallow lakes, running and quiet waters, stagnant pools, even oceans.

Movement: Swims using hind legs and their swimming hairs. When not swimming, will rest on plants or the bottom, and must hold onto an object in order to stay under water.

Breathing: Surface for air. Thin film of air on the underside (plastron) kept on body. Hairs keep the air there.

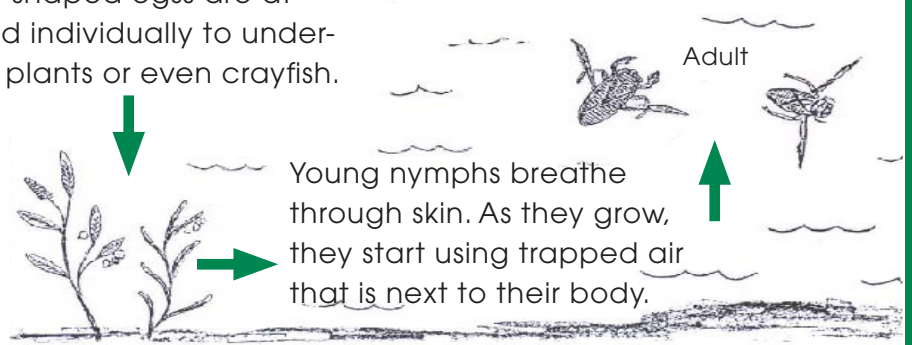
Water Quality Indicator: Group III. Some are highly tolerant of water pollution.



Life Cycle Corner

Complete Metamorphosis

Onion-shaped eggs are attached individually to underwater plants or even crayfish.



Images: McCafferty, W. Patrick. *Aquatic Entomology*, 1981.



CREEK CONNECTION
Allegheny College